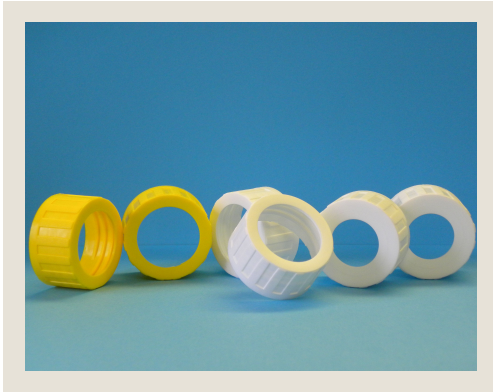


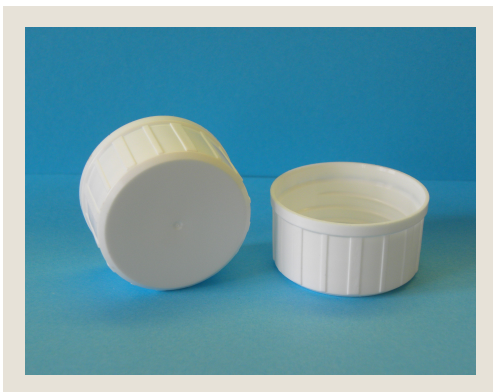
## 38mm Range



<b>Order Code:</b>	38.H
<b>Raw Material:</b>	Polypropylene (PP)
<b>Thread Form:</b>	Buttress
<b>Internal Diameter:</b>	35.70mm
<b>External Diameter:</b>	41.00mm
<b>External Height:</b>	21.50mm
<b>Torque:</b>	2.4 N-m +/- 0.4
<b>Box Quantity:</b>	1000 per Box



<b>Order Code:</b>	38.K
<b>Raw Material:</b>	Polypropylene (PP)
<b>Thread Form:</b>	Buttress
<b>Internal Diameter:</b>	35.20mm
<b>External Diameter:</b>	45.00mm
<b>External Height:</b>	22.35mm
<b>Torque:</b>	2.4 N-m +/- 0.4
<b>Box Quantity:</b>	900 per Box



<b>Order Code:</b>	38.L
<b>Raw Material:</b>	Polypropylene (PP)
<b>Thread Form:</b>	Buttress
<b>Internal Diameter:</b>	35.70mm
<b>External Diameter:</b>	40.70mm
<b>External Height:</b>	22.10mm
<b>Torque:</b>	2.4 N-m +/- 0.4
<b>Box Quantity:</b>	1000 per Box

## 38mm Range



<b>Order Code:</b>	38.N
<b>Raw Material:</b>	Polypropylene (PP)
<b>Thread Form:</b>	Buttress
<b>Internal Diameter:</b>	35.20mm
<b>External Diameter:</b>	41.00mm
<b>External Height:</b>	23.00mm
<b>Torque:</b>	2.4 N-m +/- 0.4
<b>Box Quantity:</b>	900 per Box



<b>Order Code:</b>	38.NA
<b>Raw Material:</b>	Polypropylene (PP)
<b>Thread Form:</b>	Buttress
<b>Internal Diameter:</b>	35.20mm
<b>External Diameter:</b>	40.70mm
<b>External Height:</b>	23.00mm
<b>Torque:</b>	2.4 N-m +/- 0.4
<b>Box Quantity:</b>	900 per Box



<b>Order Code:</b>	38.P
<b>Raw Material:</b>	Polypropylene (PP)
<b>Thread Form:</b>	Buttress
<b>Internal Diameter:</b>	35.20mm
<b>External Diameter:</b>	41.00mm
<b>External Height:</b>	21.50mm
<b>Torque:</b>	3.4 N-m +/- 0.4
<b>Box Quantity:</b>	1000 per Box

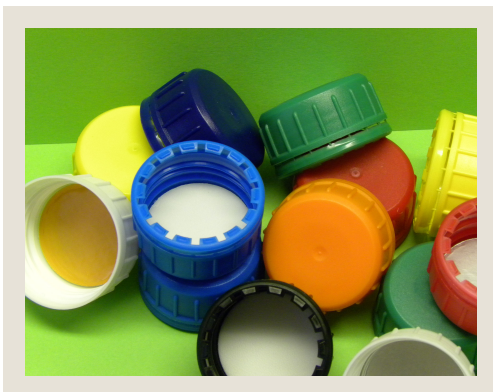
## 38mm Range



<b>Order Code:</b>	38.R
<b>Raw Material:</b>	Polypropylene (PP)
<b>Thread Form:</b>	Buttress
<b>Internal Diameter:</b>	35.20mm
<b>External Diameter:</b>	50.50mm
<b>External Height:</b>	25.80mm
<b>Torque:</b>	2.4 N-m +/- 0.4
<b>Box Quantity:</b>	600 per Box

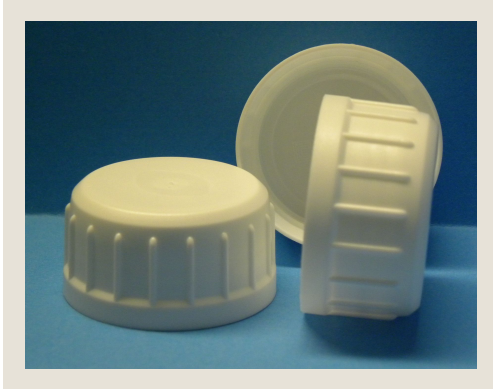


<b>Order Code:</b>	38.S
<b>Raw Material:</b>	Polypropylene (PP)
<b>Thread Form:</b>	Buttress
<b>Internal Diameter:</b>	35.35mm
<b>External Diameter:</b>	41.00mm
<b>External Height:</b>	21.50mm
<b>Torque:</b>	2.4 N-m +/- 0.4
<b>Box Quantity:</b>	1000 per Box

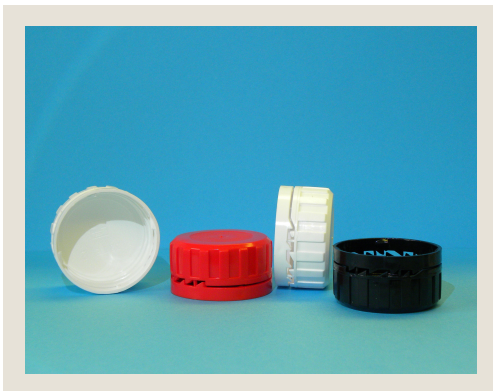


<b>Order Code:</b>	38.SK
<b>Raw Material:</b>	Polyethylene (HDPE)
<b>Bottle Thread:</b>	R4
<b>Thread Form:</b>	Round Bump Off
<b>Internal Diameter</b>	36.20mm
<b>External Diameter:</b>	42.60mm
<b>External Height:</b>	23.00mm
<b>Torque:</b>	26 - 35 in/lbs
<b>Box Quantity:</b>	1800 per Box

## 38mm Range



<b>Order Code:</b>	38.SKS
<b>Raw Material:</b>	Polyethylene (HDPE)
<b>Bottle Thread:</b>	R4
<b>Thread Form:</b>	Round Bump Off
<b>Internal Diameter</b>	36.20mm
<b>External Diameter:</b>	42.60mm
<b>External Height:</b>	22.30mm
<b>Torque:</b>	26 - 35 in/lbs
<b>Box Quantity:</b>	1800 per Box



<b>Order Code:</b>	38.T
<b>Raw Material:</b>	Polyethylene (HDPE)
<b>Thread Form:</b>	Bump Off
<b>Internal Diameter:</b>	35.50mm
<b>External Diameter:</b>	41.00mm
<b>External Height:</b>	21.50mm
<b>Torque:</b>	2.4 N-m +/- 0.4
<b>Box Quantity:</b>	1000 per Box



<b>Order Code:</b>	38.U
<b>Raw Material:</b>	Polypropylene (PP)
<b>Bottle Thread:</b>	R4
<b>Thread Form:</b>	Buttress
<b>Internal Diameter</b>	35.20mm
<b>External Diameter:</b>	40.00mm
<b>External Height:</b>	11.00mm
<b>Torque:</b>	2.4 N-m +/- 0.4
<b>Box Quantity:</b>	1500 per Box

## 38mm Range



<b>Order Code:</b>	38.V
<b>Raw Material:</b>	Polypropylene (PP)
<b>Thread Form:</b>	Buttress
<b>Internal Diameter:</b>	35.20mm
<b>External Diameter:</b>	41.00mm
<b>External Height:</b>	14.70mm
<b>Torque:</b>	2.4 N-m +/- 0.4
<b>Box Quantity:</b>	1500 per Box



<b>Order Code:</b>	38.X
<b>Raw Material:</b>	Polypropylene (PP)
<b>Thread Form:</b>	Buttress
<b>Internal Diameter:</b>	35.20mm
<b>External Diameter:</b>	41.00mm
<b>External Height:</b>	14.70mm
<b>Torque:</b>	2.4 N-m +/- 0.4
<b>Box Quantity:</b>	1500 per Box

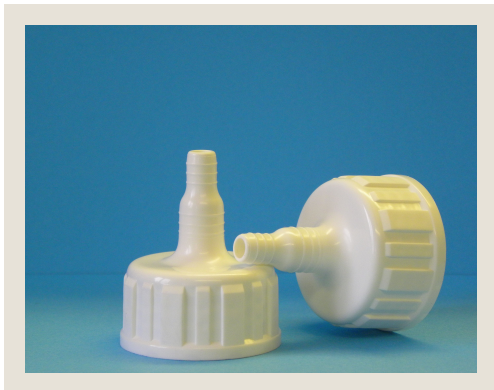


<b>Order Code:</b>	38.X.H
<b>Raw Material:</b>	Polypropylene (PP)
<b>Thread Form:</b>	Buttress
<b>Internal Diameter:</b>	35.20mm
<b>External Diameter:</b>	41.00mm
<b>External Height:</b>	14.70mm
<b>Torque:</b>	2.4 N-m +/- 0.4
<b>Box Quantity:</b>	1500 per Box

## 38mm Range



<b>Order Code:</b>	38.Y
<b>Raw Material:</b>	Polypropylene (PP)
<b>Thread Form:</b>	Buttress
<b>Internal Diameter:</b>	35.20mm
<b>External Diameter:</b>	41.00mm
<b>External Height:</b>	14.50mm / 22.00mm
<b>Torque:</b>	2.4 N-m +/- 0.4
<b>Box Quantity:</b>	900 per Box



<b>Order Code:</b>	38.Z
<b>Raw Material:</b>	Polypropylene (PP)
<b>Thread Form:</b>	Buttress
<b>Internal Diameter:</b>	35.20mm
<b>External Diameter:</b>	41.00mm
<b>External Height:</b>	21.50mm / 50.70mm
<b>Torque:</b>	2.4 N-m +/- 0.4
<b>Box Quantity:</b>	700 per Box



**plasticclosuresltd.**  
A CLOSURE FOR ALL APPLICATIONS

## 38mm Range

### Wad Types:

Plain No Liner (OCP)  
LDPE Foam (EPE)  
Aluminium Facing (EAM)  
Induction Heat Seal for PE or Glass Bottles (205)  
Induction Heat Seal Pictogram for PE Bottles (250)  
Induction Heat Seal for PET Bottles (605)  
Induction Heat Seal Pictogram for PVC Bottles (650)  
Induction Heat Seal Top Tab Pull Seal for PE and PET Bottles (TTF/TTE)  
Venting Breather (PNL) Liner

38.H & 38.X.H comes in various Hole Sizes

38.P Plugseal only

38.Z Fitted EPE Washer only