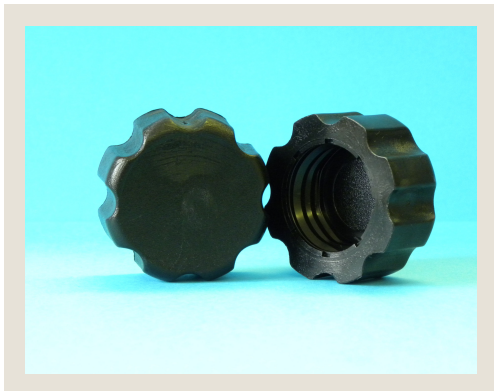


28mm Range



Order Code:	28410TT
Raw Material:	Low Density (LDPE)
Bottle Thread:	Specific
Thread Form:	Buttress
Internal Diameter	26.30mm
External Diameter:	32.00mm
External Height:	47.20mm
Torque:	1.7 N-m +/- 0.4
Box Quantity:	3000 per Box

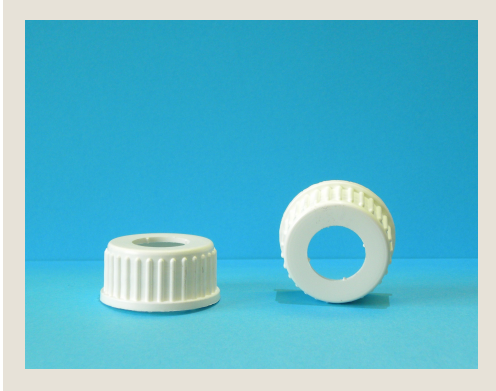


Order Code:	28.G
Raw Material:	Polyethylene (HDPE)
Thread Form:	Buttress
Internal Diameter:	25.20mm
External Diameter:	42.80mm
External Height:	19.49mm
Torque:	2.4 N-m +/- 0.4
Box Quantity:	500 per Box



Order Code:	28.H.S12
Raw Material:	Polypropylene (PP)
Thread Form:	Buttress
Internal Diameter:	25.20mm
External Diameter:	31.30mm
External Height:	16.00mm
Torque:	2.4 N-m +/- 0.4
Box Quantity:	2000 per Box

28mm Range



Order Code:	28.H
Raw Material:	Polypropylene (PP)
Thread Form:	Buttress
Internal Diameter:	25.20mm
External Diameter:	31.30mm
External Height:	16.00mm
Torque:	2.4 N-m +/- 0.4
Box Quantity:	2000 per Box



Order Code:	28.J
Raw Material:	Polypropylene (PP)
Thread Form:	Buttress
Internal Diameter:	25.20mm
External Diameter:	30.80mm
External Height:	20.20mm
Torque:	2.4 N-m +/- 0.4
Box Quantity:	1500 per Box

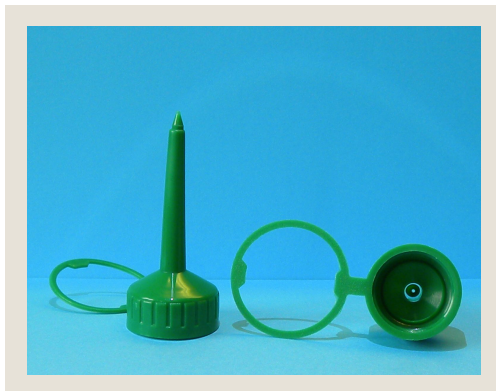


Order Code:	28.P
Raw Material:	Polypropylene (PP)
Bottle Thread:	Specific
Thread Form:	Round Bump Off
Internal Diameter:	25.60mm
External Diameter:	31.00mm
External Height:	29.20mm
Torque:	2.4 N-m +/- 0.4
Box Quantity:	2500 per Box

28mm Range



Order Code:	28.U
Raw Material:	Polypropylene (PP)
Thread Form:	Butress
Internal Diameter:	25.20mm
External Diameter:	30.80mm
External Height:	14.60mm
Torque:	2.4 N-m +/- 0.4
Box Quantity:	2000 per Box



Order Code:	28.W
Raw Material:	Polyethylene (HDPE)
Thread Form:	Butress
Internal Diameter:	22.60mm
External Diameter:	28.60mm
External Height:	11.75mm / 67.00mm
Torque:	3.0 N-m +/- 0.4
Box Quantity:	1000 per Box



Order Code:	28.Z
Raw Material:	MDPE
Thread Form:	Butress
Internal Diameter:	25.45mm
External Diameter:	31.50mm
External Height:	55.85mm
Torque:	2.4 N-m +/- 0.4
Box Quantity:	1000 per Box



plasticclosuresltd.
A CLOSURE FOR ALL APPLICATIONS

28mm Range

Wad Types:

Plain No Liner (OCP)
LDPE Foam (EPE)
Aluminium Facing (EAM)
Induction Heat Seal for PE or Glass Bottles (205)
Induction Heat Seal Pictogram for PE Bottles (250)
Induction Heat Seal for PET Bottles (605)
Induction Heat Seal Pictogram for PVC Bottles (650)
Induction Heat Seal Top Tab Pull Seal for PE and PET Bottles (TTF/TTE)
Venting Breather (PNL) Liner

28.D Over Seal Cap only
28.H.S12 Plug Seal only
28.H Hole Top only
28.W, 28.X & 28.Z Plug Seal Spout only